

WÖHLER



INNOVATIVE TECHNOLOGY THAT WILL GROW YOUR BUSINESS

Wöhler VIS 700 HD Inspection System

High definition images for reliable results

The Measure of Technology



Made in
Germany

Wohler VIS 700 HD Inspection System

The new digital Wohler camera generation

The Wohler VIS 700 offers exactly what professionals have been waiting for: razor sharp high definition images, an adjustable focus for precise inspection, and wireless locating with adjustable frequency; 512 Hz/8.9 kHz/9.2 kHz. The Wohler VIS 700 is the ideal inspection camera for waste water pipes, flue gas lines and ventilation ducts as well as NDT and plumbing applications.

A new digital high-resolution sensor assures amazingly sharp images. With the Wohler VIS 700, professionals are able to plan their maintenance services on the basis of clearly visible facts. The displayed level indication ensures you to keep orientation in the pipe. The camera display shows the camera head position and angle for ease of navigation. The home function allows you to realign the camera head straight forward when needed. HD images are displayed for you on the brilliant,

touch screen high-resolution monitor. The Wohler VIS 700 is designed for the future with the ability of camera control and video transmission via app. You can also save all footage on an SD Card for reviewing at a later time.

The easily adjustable focus ensures a crystal clear image, no matter how large the pipe is. Additional settings and extras, such as the touch screen keyboard, are accessible by tapping the touchscreen monitor.

- 
HD
TOUCH SCREEN
- 
VOICE
RECORDING
- 
VIDEO
FUNCTION
- 
PHOTO
FUNCTION
- 
HOME
FUNCTION
- 
EASY TO
CLEAN
- 
LOCATOR
TRANSMITTER
- 
WIRELESS LAN
TRANSMISSION
- 
POWER
UP TO 4h
- 
VIS 700 APP

- ▶ High Definition image quality
- ▶ 1.5" HD detachable waterproof pan- and tilt color camera head (IP 67)
- ▶ Optional 1" HD detachable waterproof miniature color camera head (IP 68)
- ▶ 7" HD color touchscreen with adjustable focus via joystick / touch screen
- ▶ Built-in radio transmitter with adjustable locator frequency: 512 Hz / 8.9 kHz / 9.2 kHz
- ▶ Position and level display for orientation during inspections
- ▶ On screen keyboard for typing comments / descriptions to photos
- ▶ Convenient option for remote control of the camera head and video streaming via free Wohler App



Razor sharp pictures in HD-quality, clear menu and comfortable to hold.



Precise location of the camera head with the Wohler L 200 Locator.



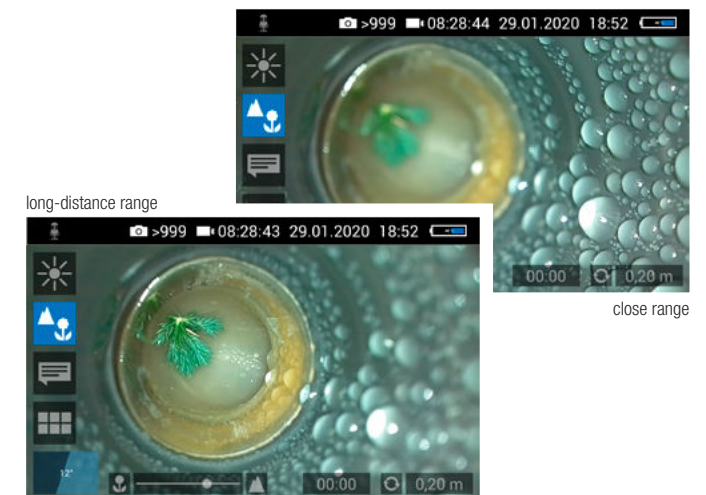
Secure drain inspection with the waterproof camera head.



Inspection of flue gas lines from 2": easily negotiates tight bends of 87°.



Fast cleaning for lasting hygiene: Wash the case and the push rod with water.



The adjustable focus makes it possible to precisely control the depth of focus.

Overview of functions

HD Video Inspection

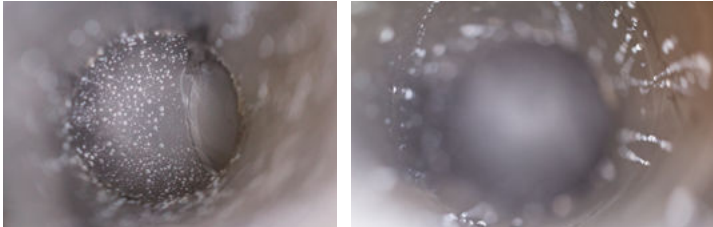
Digital pictures and a high resolution monitor provide an absolutely clear image.

Flexible Operation

The monitor can be fixed to the case in two different positions. The screen can be operated by touch or by joystick. The monitor is tiltable and removable.

Individual Control of Sharpness

The motor driven focus can be adjusted by touchscreen, joystick or app.



far range

close range

Comments & Voice Notes

A comments function allows you to add descriptions to captured photos. It is also possible to add voice notes to video footage.

Position and angle display

The digital distance counter and angle display always lets you know in which position the camera head is. The length of unwound cable is sensed electronically and displayed for pinpoint localization. The "Home" function automatically aligns the camera head straight forward so you never lose your orientation in the pipe.

Easy to clean and a lot of space for accessories

The push rod can be cleaned quickly thanks to the easily removable top shell. Moreover, the twinwall hard case also protects the camera head and the monitor.



Hand-held

Adjustable to individual requirements, reliable grip when operating the monitor.



Anti-glare protection

The anti-glare protection is stored in the case. If necessary it will be fixed to the monitor.

Wireless operation & video streaming via app

Comfortable remote operation of the camera head including live video transmission – simply from your smartphone or tablet.

Powerful Li-Ion battery

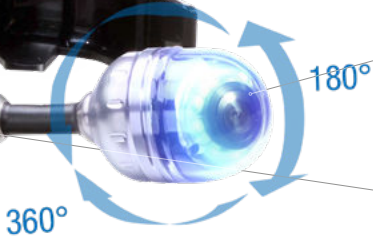
With a respective operating battery life of 4 hours – high speed charging via the latest USB standard (USB-C connection).

USB stick & SD Card slot

Save your pictures and videos directly to the SD Card or an USB stick.

HD pan & tilt color camera head 1.5"

Pans through 360° and tilts 180° from left to right. Precisely adjustable depth of focus.



Durable Camera Rod

The flexible and durable 100 ft push rod can easily master several bends.

✂ Application

Analyze damage and inspect:

- ▶ House connection pipes up to 8"
- ▶ NDT applications
- ▶ Flue gas systems of 2.5" and larger
- ▶ Ventilation system ductwork
- ▶ False ceilings, hollow spaces, shafts
- ▶ Industrial machines / plant
- ▶ Waste water lines of 2.5" and larger
- ▶ Inspection of smaller pipes with optional miniature camera head (IP 68)

⚙ Functionality


- ▶ 7" HD Touchscreen for intuitive operation
- ▶ Adjustable depth of focus – razor sharp recordings from any perspective
- ▶ Pan- & tiltable for all-round view
- ▶ Camera head with integrated variable frequency transmitter
- ▶ Electronically determined position and angle of the camera head shown on the display
- ▶ Brightly illuminating color camera head, 1.5" and 2.5" length, easily negotiates tight bends
- ▶ Digital distance counter
- ▶ 4 hours operating time with Li-Ion battery
- ▶ Fully equipped mobile solution in a rugged twinwall hard case
- ▶ Text comment function via on-screen keyboard
- ▶ Recording of voice comments
- ▶ Fast and effective cleaning of the camera rod

📁 Data management

- ▶ Simply record and store photos and videos on the SD Card 32 GB for documentation and archiving purposes for you and your customers

📍 Localisation with Wohler L 200 Locator (optional)

- ▶ Transmitter integrated in camera head makes it possible to precisely locate the camera head
- ▶ Facilitates targeted repairs to damaged pipelines
- ▶ Telescopic holder makes it possible to locate damage under floors or in ceilings
- ▶ Powerful rechargeable battery
- ▶ Localization of 8.9 kHz and 9.2 kHz frequencies

Technical Data		
Monitor	Dimensions housing	10 x 6 x 2"
	TFT-display	7" / 16:9 format
	Video out	FBAS signal
	Weight	2 lbs
	Power supply	USB-C 5 V / 3 A 3.7 V / 11.4 Ah rechargeable Li-Ion battery
	Battery operating time	4 h (battery status in display)
Wohler HD pan- and tiltable camera head 1.5", detachable	Type	1/2.7" COLOR CMOS
	Pixels	656 x 492 (NTSC)
	Light sensitivity	0.5 Lux
	Lens	f = 0.09", F = 2.5
	Viewing angle	70°
	Light source	10 white LEDs
	Degree of protection	Waterproof to IP 67
	Dimensions	1.5" x 2.5"
Wohler HD miniature camera head 1", detachable	Type	1/2.7" COLOR CMOS
	Pixels	656 x 492 (NTSC)
	Light sensitivity	0.5 Lux
	Lens	f = 0.09", F = 2.5
	Viewing angle	150°
	Light source	10 white LEDs
	Degree of protection	Waterproof to IP 68
	Dimensions	1" x 1.3"
Camera rod	Length	100 ft
	Diameter	33" x 22"
	Distance measurement	digital distance counter
	Detailed technical data can be found under www.wohlerusa.com/P_16510.dl	
		

Kits



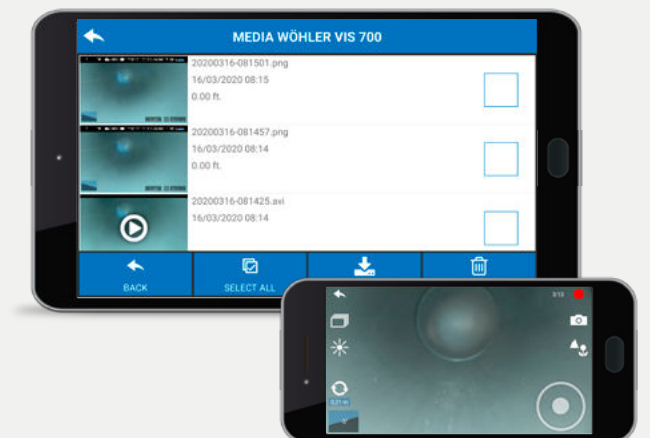
	Wohler VIS 700 HD Inspection Camera Push rod camera	Wohler VIS 700+ HD Inspection Camera Push rod camera	Wohler VIS 700 HD Inspection Camera Cable camera chimney kit	
Scope of delivery	Wohler VIS 700 Monitor with 7" HD TFT-broad band color monitor incl. 5 ft connection cable			
	Wohler VIS 700 Monitor with 7" HD TFT-broad band color monitor			
	Glare shield			
	Li-Ion battery			
	Wohler HD miniature camera head 1", detachable			
	Wohler HD pan- and tiltable camera head 1.5", detachable			
	SD Card 32 GB			
	Camera rod 0.34" x 0.22" – 100 ft long			
	Camera cable 66 ft with metric marking			
	3 replacement plastic domes			
	Anti-slide mat			
	USB charger with USB-C cable			
	Plastic case			
	Carrying strap			
	Guidance sleeve			
	Guidance sleeve with protection cage			
	Camera holder			
	P/N	7082	7498	7459

Wohler VIS 700 App














1 camera – 2 displays with the Wohler VIS 700 App

The free Wohler VIS 700 app allows camera control and video streaming on your smartphone / tablet. It can't get much more comfortable.

The monitor image can be sent to mobile devices via WLAN and further processed via app.



Accessories

Article description	P/N	
	Wohler VIS Guidance Set 70 for camera head 1" guidance sleeve with protection cage and centering star	3883
	Wohler Guidance Set 100 for camera head 1.5" protection sleeve with cut-out, roller guide and centering star	4240
	Centering Brush for camera heads	3850
	Camera holder for camera head 1.5"	7068
	Protection Sleeve for camera head 1.5"	2641
	Replacement Polycarbonate Dome for camera head 1.5" 10 pcs.	3675
	Glass Dome for camera head 1.5"	3674
	Camera Roller Guide for camera heads and push rods	3681
	Guidance Ball for camera heads and push rods	3634
	Wohler HD miniature camera head 1" color, digital and detachable	7613
	Wohler Light Ring 1" / 1.5" HD for HD camera heads 1" / 1.5" light ring with 18 white LEDs, outer 2.1", detachable	8818
	Wohler L 200 Locator for HD camera heads 1" / 1.5" Scope of delivery: Wohler L 200 Locator, plastic case, USB power supply with Micro-USB cable, chalk (12 pcs. box, yellow), telescopic rod and headphones	7430
	Wohler VIS Camera Trolley Set for camera heads Scope of delivery: Wohler VIS Camera Trolley, camerahead-holder, storage bag, stabilization sleeve for light ring (can only be used in combination with supplementary light ring)	4753

For more accessories please visit woehlerusa.com

WÖHLER

Wohler USA Inc.
 208 South Main Street · Middleton, MA 01949
 Phone: +1 978 750 9876 · Fax: +1 978 750 9799
 E-Mail: info@woehlerusa.com

www.woehlerusa.com