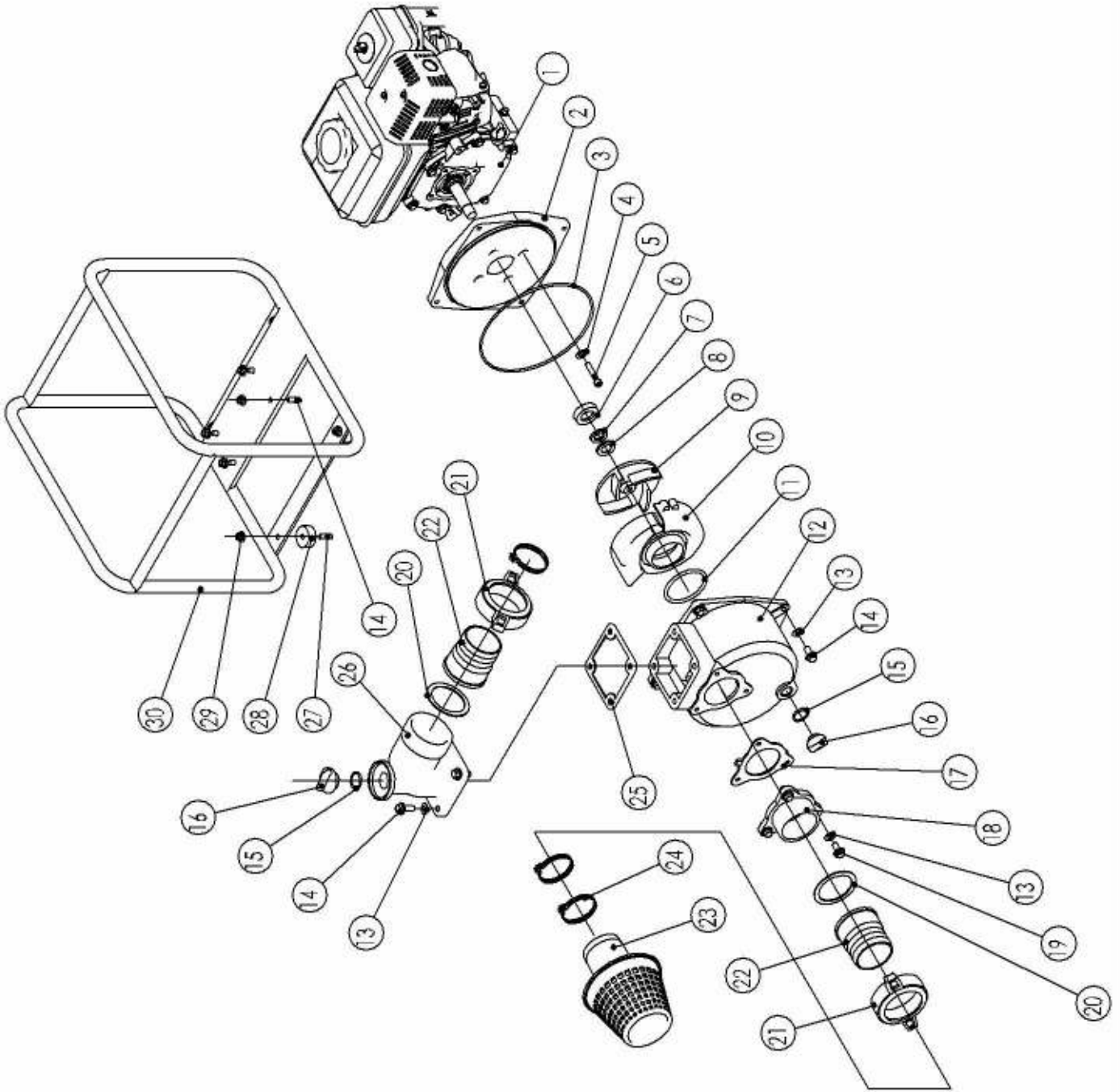


Water Pump Model SGP60H



Gasoline Water Pump Parts List

Model SGP80H

| Ref. No. | Part No. | Description | | Qty. |
|----------|----------------|-----------------------------------|----------------|------|
| 1 | SP168F-1000000 | Engine SPE160 | 老款发动机总成 SPE160 | 1 |
| 2 | SWP-30-1000500 | Pump cover | 水泵盖 | 1 |
| 3 | SWP-30-1000502 | Pump cover water seal | 水泵盖O型密封圈 | 1 |
| 4 | SWP-30-1000005 | Washer 8 | 垫圈8 | 4 |
| 5 | GB70-86 | Screw M8×60 | 内六角螺栓M8×60 | 4 |
| 6 | SWP-30-1000510 | Mechanical water seal(Still ring) | 弹性密封组件(静环) | 1 |
| 7 | SWP-30-1000402 | ring) | 摩擦块(动环) | 1 |
| 8 | SWP-30-1000403 | seal) | 动环密封圈 | 1 |
| 9 | SWP-30-1000401 | Impeller | 叶轮 | 1 |
| 10 | SWP-30-1000302 | Impeller cover | 叶轮盖 | 1 |
| 11 | SWP-30-1000301 | Impeller cover water seal | 叶轮盖O型密封圈 | 1 |
| 12 | SWP-30-1000200 | Pump body | 水泵本体 | 1 |
| 13 | GB97.1-85 | Flat washer 10 | 垫片10 | 11 |
| 14 | GB5780-86 | Screw M8×30 | 螺栓M8×30 | 8 |
| 15 | SWP-30-1000208 | Drain plug water seal | 堵头O型密封圈 | 2 |
| 16 | SWP-30-1000207 | Drain plug | 堵头 | 2 |
| 17 | SWP-30-1000209 | One-way valve | 单向阀片 | 1 |
| 18 | SWP-30-1000206 | Water inlet | 进水座 | 1 |
| 19 | GB5789-86 | Screw M10×20 | 螺栓M10×20 | 3 |
| 20 | SWP-30-1000002 | Joint Water seal | 接口密封垫 | 2 |
| 21 | SWP-30-1000205 | Joint span | 接口螺母扳手 | 2 |
| 22 | SWP-30-1000001 | Joint | 接口 | 2 |
| 23 | SWP-30-1000003 | Strainer | 过滤网 | 1 |
| 24 | SWP-30-2000210 | Pipe clip | 卡箍 | 2 |
| 25 | SWP-30-1000204 | Water outlet seal | 密封垫 | 1 |
| 26 | SWP-30-1000203 | Water outlet | 出水座 | 1 |
| 27 | GB5780-86 | Screw M8×25 | 螺栓M8×25 | 4 |
| 28 | SWP-30-2000001 | Vibration absorber | 减震垫 | 4 |
| 29 | GB6177-86 | Nut M8 | 螺母M8 | 4 |
| 30 | SWP-30-2000100 | Steel frame | 水泵架子 | 1 |